

ABBREVIATIONS

ABV. - ABOVE
A.F.F. - ABOVE FINISH FLOOR
AWN - AWNING (WINDOW)
BATT. INSUL. - BATTEN INSULATION
BL. - BUILDING LINE
BLKG - BLOCKING
BLW - BELOW
BM. - BEAM
BRG - BEARING
BSMT. - BASEMENT
BTM. - BOTTOM
BTWN. - BETWEEN
BYND. - BEYOND
CL. - CENTER LINE
CL'G - CEILING
CLO. - CLOSET
CMU - CONCRETE MASONRY UNIT
COL. - COLUMNS
CONC. - CONCRETE
CONT. - CONTINUOUS
CNTR. - CENTER
CSMT - CASEMENT (WINDOW)
DH. - DOUBLE HUNG (WINDOW)
DIA. - DIAMETER
DR. - DOOR
D.S. - DOWN SPOUT
DN. - DOWN
EA. - EACH
EL. ELEV. - ELEVATION
EQ. - EQUAL
EX., EXT'G - EXISTING
F.F. - FINISH FLOOR
FLR. - FLOOR
F.P. - FIREPLACE
F.O.M. - FACE OF MASONRY
F.O.S. - FACE OF SHEATHING
FNDTN. - FOUNDATION
F.R. - FIRE RATED
FT'G - FOOTING
GLS. - GLASS
GWB - GYPSUM WALLBOARD
HDR. - HEADER
HDWD. - HARDWOOD
HNGR. - HANGER
HT. - HEIGHT
INT. - INTERIOR
JST. - JOISTS
LIN./PNTRY - LINEN / PANTRY
MANUF. - MANUFACTURER
MIN. - MINIMUM
ML. - MICRO-LAMINATED TIMBER
MTL. - METAL
MULL. - MULLION
N.I.C. - NOT IN CONTRACT
O.C. - ON CENTER
O.H. - OVERHANG
PIR. - POLYISOCYANURATE(RIGID INSUL.)
PKT. - POCKET DOOR
PR. - PAIR
PRE-ENGR. - PRE-ENGINEERED
REINF. - REINFORCED
R.O. - ROUGH OPENING
R.O.W. - RIGHT OF WAY
SHT'G - SHEATHING
S.S. - STAINLESS STEEL
STL. - STEEL
T.M. - TO MATCH
TRTD - TREATED (LUMBER)
TYP. - TYPICAL
WDW - WINDOW
W/ - WITH
WD. - WOOD

COWDIN DESIGN + BUILD

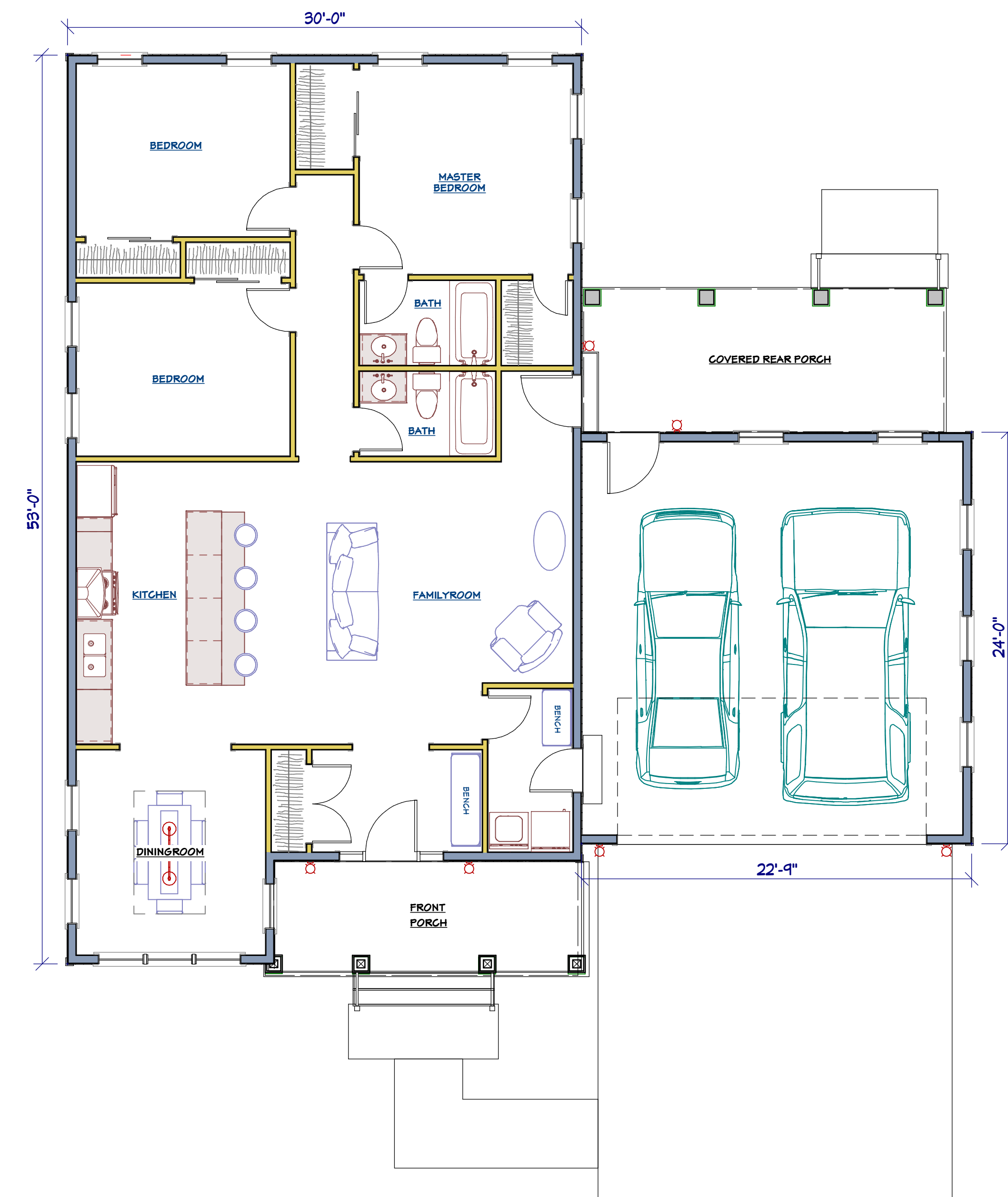
DESIGNED PER IBC, IRC & MICHIGAN BUILDING CODE



FRONT PERSPECTIVE VIEW
NOT TO SCALE

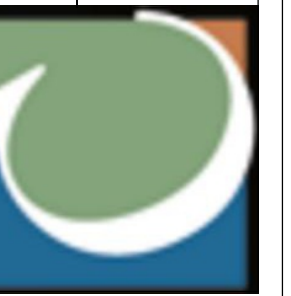


REAR PERSPECTIVE VIEW
NOT TO SCALE



1ST FLOOR PLAN
NOT TO SCALE

COWDIN DESIGN BUILD
148 STARKWEATHER ST.
PLYMOUTH, MI. 48170
1 (734) 414-1500 WWW.COWDINDESIGNBUILD.COM



MARKETING COVER SHEET

COWDIN DESIGN + BUILD
IBC CODE, IRC CODE, MI. CODE

DATE:

5/24/2018

SHEET:

A-1